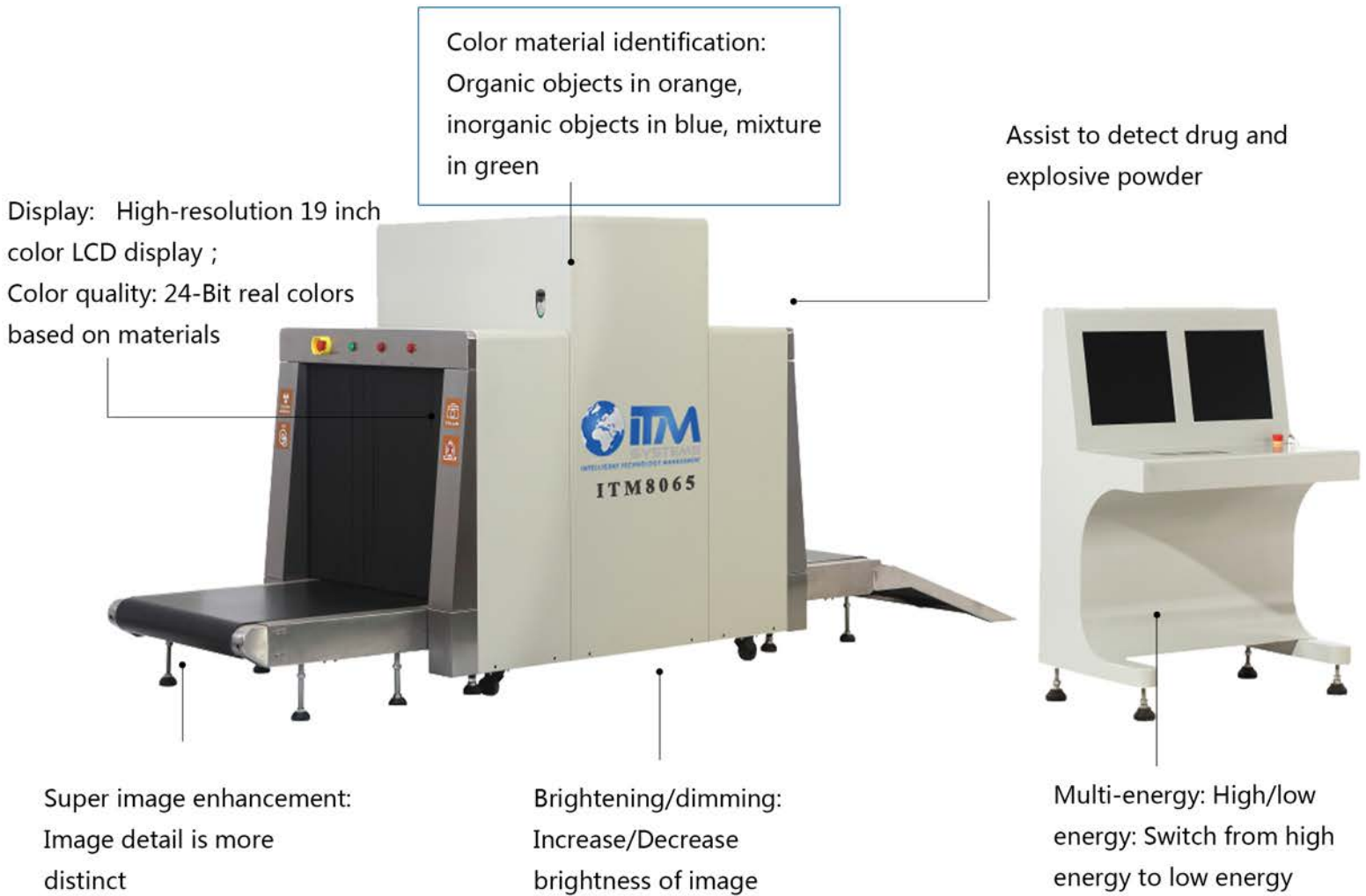


# ITM8065 X-RAY BAGGAGE SCANNER



ITM SYSTEMS: The Global Leader of Security Metal Detectors and Checkpoint Screening



## GENERAL SPECIFICATIONS:

- Tunnel Size : 800(W) ×650(H) mm
- Conveyor Speed: 0.22m/s
- Conveyor Max Load: 200 kg
- Single inspection dosage: < 1.15μGy
- Leakage radiation: <0.14μGy/h
- Wire Resolution: 40AWG
- Steel Penetration: 38mm
- Film Safety: For ISO 1600

ITM Systems offers its services to a wide range of customers from individuals to corporate businesses covering different sectors. As a company we manufacture tailored high tech security solutions for Banking, Airports, Hospitality, Transport, Universities, Telecom, Mining and Petroleum compounds.

## X-RAY GENERATOR

1. Orientation: Downward;
2. Tube Current: 0.4~1.2MA ( adjustable ) ;
3. Anode voltage: 100-160KV ( adjustable ) ;
4. Angle: 80 °;
5. Cooling: Sealed oil bath with forced air;
6. Generator cooling/working periods:  
Sealed oil bath with forced air/100%.

## SPECIAL FEATURES

**Network interface:** Capable of connecting to LAN, and support multi-terminal check for baggage at same time;

**Safety ray:** Ray is transmitted under automatic control, avoiding the error;  
**One-key shutdown control:** Just rotate the key to shut down the machine; it is safety, easy and convenient;

**Eagle eye:** Capable of expediently observing the magnifying area

**Self-diagnosis function:** Give message automatically if malfunction for prompt maintenance.



[www.itmsystems.com](http://www.itmsystems.com)

### OPERATING ENVIRONMENT :

- ◆ Storage Temperature: -20°C to 60°C
- ◆ Operating Temperature: 0°C to 45°C
- ◆ Relative Humidity: 20 to 95% non-condensing
- ◆ System Power: 220 VAC (±10%) 50±3HZ
- ◆ Power wastage: 1.0 KW (Max)
- ◆ Noise <55DB
- ◆ X-RAY Sensor: L-shaped array detector, 24bit

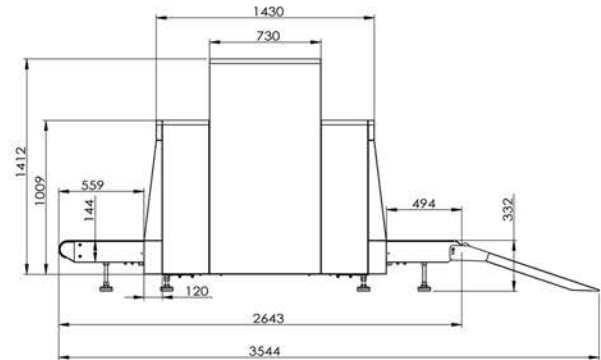
### IMAGE PERFORMANCE SYSTEM

- A:** Display: High-resolution 19 inch color LCD display ;
- B:** Color quality: 24-Bit real colors based on materials ;
- C:** Color management architectures---Different color, different matter ;
- D:** High penetration display: Increase the contrast of bright area in image to make the area that is easy to penetrate appear more clearly;
- E:** Low penetration display: Increase the contrast of dark area in image to make the area that is difficult to penetrate appear more clearly.
- F:** Edge enhancement---The edge of image is more clear ;
- H:** High penetration---Make the image more through, for look every goods in one image ;
- I:** Zoom in/zoom out---Make the image bigger ,make the image smaller ;
- J:** Display the previous twenty images and process any one of them ; Restore image to initial status;
- K:** Brighter/darker---Make image more bright /make image darker ;
- L:** Replay---Playback all images on the screen at current , be able to do the next steps ;

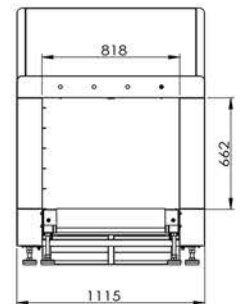
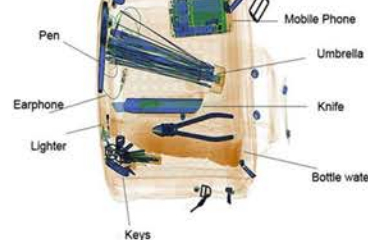
### APPLICATION AND CERTIFICATIONS

- Used for scenic spots, gymnasium, expo centre, left- baggage counter, supermarket, hotel ,court, prison..etc;
- Machine parts safeguard measures;
- High performance network function;
- Ministry of public security testing;
- EU CE Certification;
- ISO9001 Certification;
- ISO14001 Environmental Management;
- Radiation safety;

### DIMENSION DRAWING:



### Image screen



ITM8065 X-ray baggage scanner can display pseudo color and black and white images, with simple and efficient operation, with reasonable human design. We provide a fully intelligent and secure inspection system for our customers.

### ACCESSORIES :



X-Ray generator(150KV)  
Brand: KV Tech



Detection board  
Brand: DT (Finland)



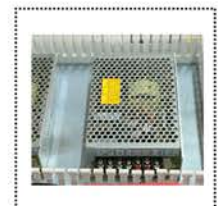
Automatic inverters  
Brand: Emerson in USA



19 inch \*2 Monitor  
Brand: Philips



Roller  
Brand: NTN(Japan)



Power supply  
Brand: Mingwei (Taiwan)

### CONTACT US :

ITM Systems Ltd

Address : Northwing, Broadway Court, Peterborough

PE1 1RP, United Kingdom

Call us : +441733567259