

ITM6040 X-RAY GENERATOR



ITM SYSTEMS: The Global Leader of Security Metal Detectors and Checkpoint Screening



GENERAL SPECIFICATIONS:

- Tunnel Size : 600 (W) ×400(H) mm
- Conveyor Speed: 0.22m/s
- Conveyor Max Load: 150 kg
- Single inspection dosage: < 1.0μGy
- Leakage radiation: <0.1μGy/h
- Wire Resolution: 40AWG(0.0787mm metal line)
- Steel Penetration: 40mm
- Film Safety: For ISO 1600

ITM Systems offers its services to a wide range of customers from individuals to corporate businesses covering different sectors. As a company we manufacture tailored high tech security solutions for Banking, Airports, Hospitality, Transport, Universities, Telecom, Mining and Petroleum compounds.

X-RAY GENERATOR

1. Orientation: Upward;
2. Tube Current: 0.4~1.25MA (adjustable) ;
3. Anode voltage: 140-160KV (adjustable) ;
4. Angle: 80 °;
5. Cooling: Sealed oil bath with forced air;
6. Duty Cycle: Rated for 100%Duty Cycle;
7. X-RAY Sensor : L-shaped array detector, 24bit;

SPECIAL FEATURES

Network interface: Capable of connecting to LAN, and support multi-terminal check for baggage at same time

Safety ray: Ray is transmitted under automatic control, avoiding the error
One-key shutdown control: Just rotate the key to shut down the machine; it is safety, easy and convenient

Eagle eye: Capable of expediently observing the magnifying area

Self-diagnosis function: Give message automatically if malfunction for prompt maintenance

TIP and training software , free programmable keys , real time diagnostic
Display date/time , baggage counter , User ID number

Review feature , recall previously image , zoom overview , step less zoom

www.itmsystems.com

OPERATING ENVIRONMENT :

- ◆ Storage Temperature: -20°C to 60°C
- ◆ Operating Temperature: 0°C to 45°C
- ◆ Relative Humidity: 20 to 95% non-condensing
- ◆ System Power: 220 VAC (±10%) 50±3HZ
- ◆ Power wastage: 1.0 KW (Max)
- ◆ Noise <60DB

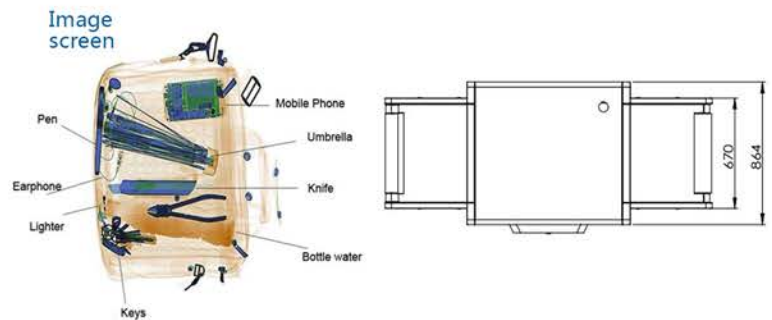
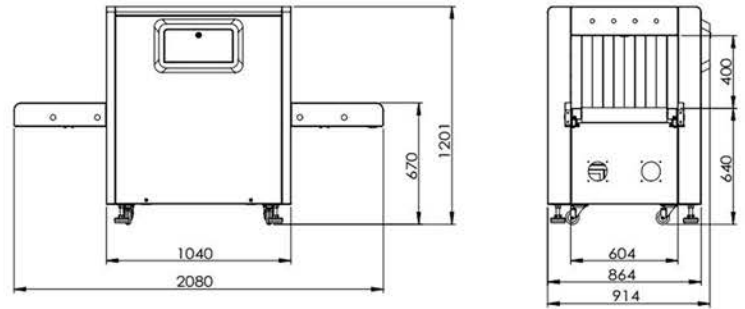
IMAGE PERFORMANCE SYSTEM

- A:** X-ray sensor---L type photodiode array detector (energy), 24 bi depth ;
- B:** Display---High-resolution liquid crystal display, 24-bit color ;
- C:** Color management architectures---Different color, different matter ;
- D:** High penetration display: Increase the contrast of bright area in image to make the area that is easy to penetrate appear more clearly;
- E:** Low penetration display: Increase the contrast of dark area in image to make the area that is difficult to penetrate appear more clearly.
- F:** Edge enhancement---The edge of image is more clear ;
- H:** High penetration---Make the image more through, for look every goods in one image ;
- I:** Zoom in/zoom out---Make the image bigger ,make the image smaller ;
- J:** Display the previous twenty images and process any one of them ; Restore image to initial status;
- K:** Brighter/darker---Make image more bright /make image darker ;

APPLICATION AND CERTIFICATIONS

- Used for scenic spots, gymnasium, expo centre, left- baggage counter, supermarket, hotel ,court, prison...etc;
- Machine parts safeguard measures;
- High performance network function;
- Ministry of public security testing;
- EU CE Certification;
- ISO9001 Certification;
- ISO14001 Environmental Management;
- Radiation safety;

dimension drawing:



ITM6040 X-ray baggage scanner can display pseudo color and black and white images, with simple and efficient operation, with reasonable human design. We provide a fully intelligent and secure inspection system for our customers.

ACCESSORIES :



X-Ray generator(150KV)
Brand: KV Tech



Detection board
Brand: DT (Finland)



Automatic inverters
Brand: Emerson in USA



Philips 19 inch
monitor



Roller
Brand: NTN(Japan)



Power Supply
Brand: Mingwei(Taiwan)

CONTACT US :

ITM Systems Ltd

Address : Northwing, Broadway Court, Peterborough PE1
1RP, United Kingdom

Call us : +441733567259