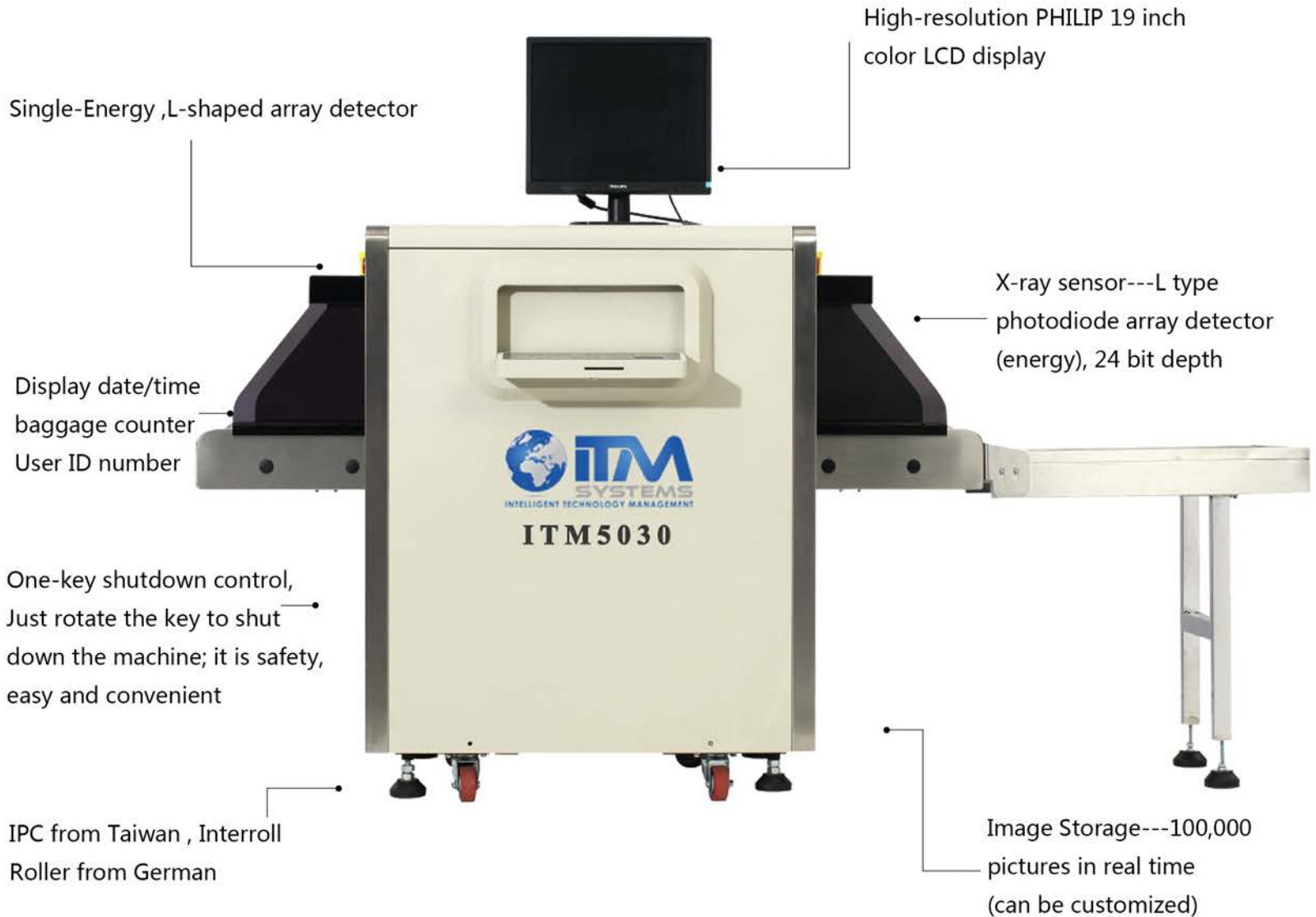


# ITM5030A X-RAY BAGGAGE SCANNER



ITM SYSTEMS: The Global Leader of Security Metal Detectors and Checkpoint Screening



## GENERAL SPECIFICATIONS:

- Tunnel Size : 500 (W) ×300 (H) mm
- Conveyor Speed: 0.22m/s
- Conveyor Max Load: 100 kg
- Tunnel Size : 500 (W) ×300 (H) mm
- Single inspection dosage: < 1.32μGy
- Wire Resolution: 40AWG
- Steel Penetration: 10mm
- Film Safety: For ISO 1600

Our aim is to help protect individuals, businesses, government from Digital Security and Cyber Security challenges like malware, logical or physical intrusions and provide them with efficient, innovative and affordable security solution.

## X-RAY GENERATOR

1. Orientation: Upward;
2. Tube Current: 0.4~0.7MA ( adjustable ) ;
3. Anode voltage: 80KV ( adjustable ) ;
4. Angle: 60 °;
5. Generator cooling/working periods: sealed oil bath with forced air/100%;

## X-RAY Sensor :

L-shaped array detector, 24bit;

## ABOUT US



ITM Systems offers its services to a wide range of customers from individuals to corporate businesses covering different sectors. As a company we manufacture tailored high tech security solutions for Banking, Airports, Hospitality, Transport, Universities, Telecom, Mining and Petroleum compounds.

[www.itmsystems.com](http://www.itmsystems.com)

**OPERATING ENVIRONMENT :**

- ◆ Storage Temperature: -20°C to 60°C
- ◆ Operating Temperature: 0°C to 45°C
- ◆ Relative Humidity: 20 to 95% non-condensing
- ◆ System Power: 220 VAC (±10%) 50±3HZ
- ◆ Power wastage: 1.0 KW (Max)
- ◆ Noise < 65DB

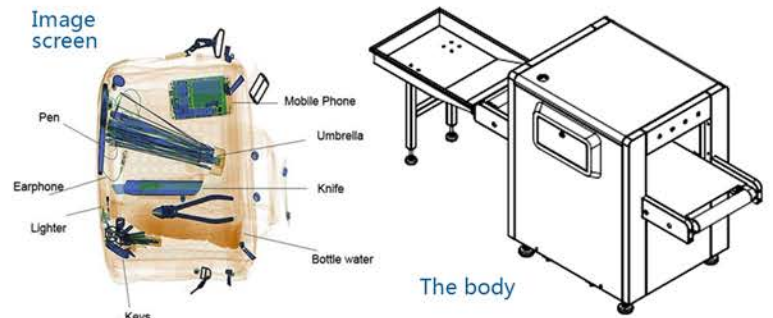
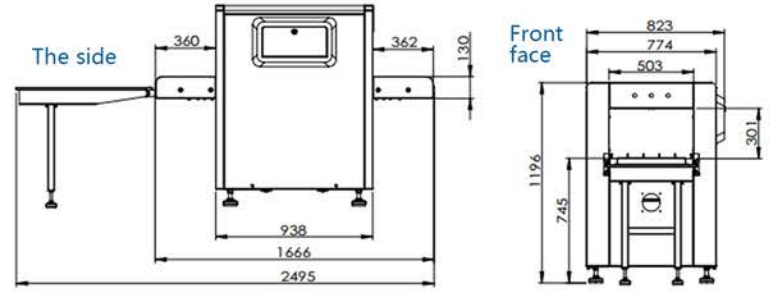
**IMAGE PERFORMANCE SYSTEM**

- A:** X-ray sensor---L type photodiode array detector (energy), 24 bit depth ;
- B:** Display---High-resolution liquid crystal display, 24-bit color ;
- C:** Color management architectures---Different color, different matter ;
- D:** Inverse, white/black/colorized---For compare these images to find the suspected dangerous goods;
- E:** To eliminate organic, Inorganic out---In view of the most important image;
- F:** Edge enhancement---The edge of image is more clear ;
- H:** High penetration---Make the image more through, for look every goods in one image ;
- I:** Zoom in/zoom out---Make the image bigger ,make the image smaller ;
- J:** 1 times size of image---Make image back to 1 times size of image;
- K:** Brighter/darker---Make image more bright /make image darker ;
- L:** Replay---Playback all images on the screen at current , be able to do the next steps ;

**APPLICATION AND CERTIFICATIONS**

- Used for scenic spots, gymnasium, expo centre, left- baggage counter, supermarket, hotel ,court, prison..etc;
- Machine parts safeguard measures;
- High performance network function;
- Ministry of public security testing;
- EU CE Certification;
- ISO9001 Certification;
- ISO14001 Environmental Management;
- Radiation safety;

**DIMENSION DRAWING:**



ITM5030A X-ray baggage scanner can display pseudo color and black and white images, with simple and efficient operation, with reasonable human design. We provide a fully intelligent and secure inspection system for our customers.

**ACCESSORIES :**



X-Ray generator(80KV)  
Brand: KV Tech



Detection board  
Brand: DT (Finland)



Automatic  
Brand: Emerson in USA



Philips 19 inch



Roller  
Brand: NTN(Japan)



Power supply  
Brand: Mingwei (Taiwan)

**CONTACT US :**

ITM Systems Ltd

Address : Northwing, Broadway Court, Peterborough  
PE1 1RP, United Kingdom

Call us : +441733567259