

Conventional Sound Strobe

● Model: iTM - SS992

Compatible with all conventional Fire alarm control panel

High Sound Level

Up to 100dB alarm sound

Long Light Life

Up to 40000 flashed



General Description

The SG109 Sound Strobe of notification appliances offers a wide range of Sound/strobes, for wall and ceiling applications, indoors and outdoors. They are designed to be used in 24 volt DC systems.

Features and Benefits

- Compatible with all the conventional fire alarm control panel
- Long light life up to 40000 flashed
- High sound level up to 100dB



Conventional Sound Strobe

Installation Guidelines

All wiring must be installed in compliance with the National Electrical Code, applicable state and local codes, and any special requirements of the local Authority Having Jurisdiction.

Figure 1. Dimension of sound strobe:

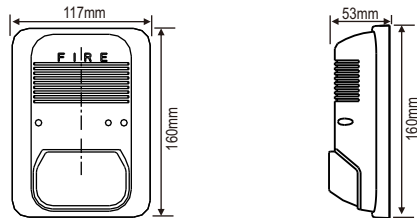
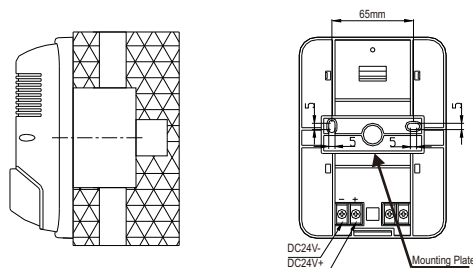


Figure 2. Installation of sound strobe:



Technical Specifications

Dimensions: Length160mm, Width 117mm, Depth 46mm

Weight: Net Weight 236g, Gross Weight 285g

Operating Temperature Range: -10°C to 50°C

Operating Humidity Range: 10% to 93% Relative Humidity, Noncondensing

Electrical Ratings

System Voltage (nominal): 24 VDC (16V~ 30VDC)

Standby Current: 60 μ A @ 24VDC

Alarm Current: 100 to 150 mA @ 24 VDC

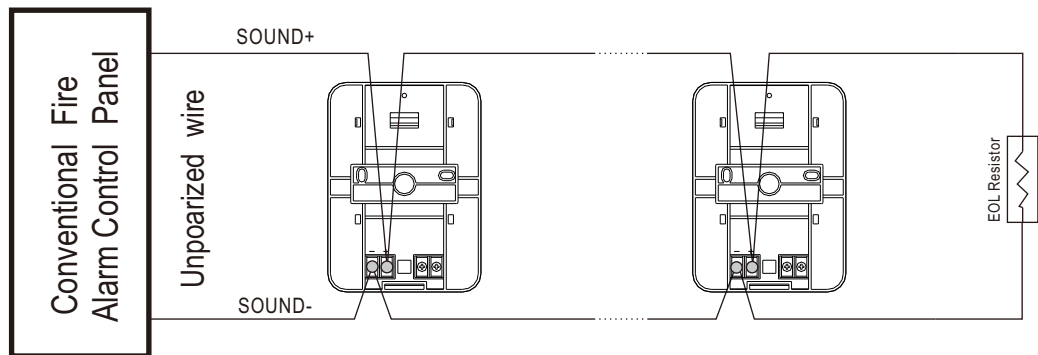
Strobe Flash Rate: 1 flash per second

Strobe Lifetime: Minimum 40000 times

Alarm Sound Intensity: Minimum 100dB

Alarm Sound Tune: Selectable: I-Ambulance, II-Police Car, III- Fire-engine

Figure 3. Wiring diagram for the detector:



Ordering Information

Part Number	Pack Quantity	Dimensions (w x d x h millimetres)	Weight
iTM-SS992	Individual (1 units)	160x117x46	236g

Distributed by: