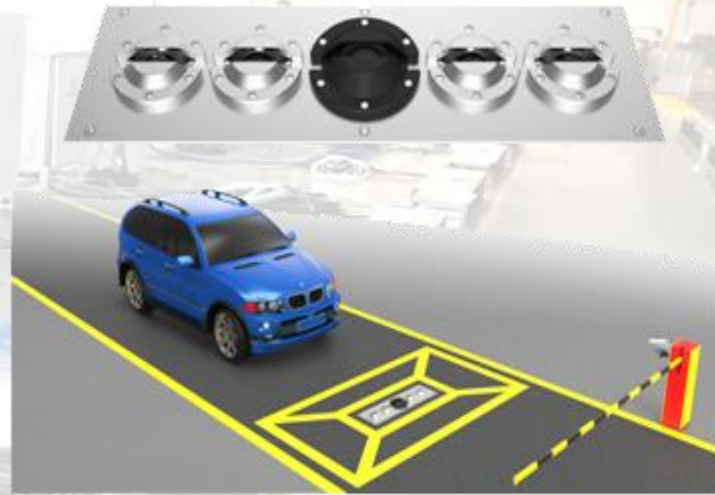




Itm Systems

www.itmsystems.com



Model:ITM-UVSS-F

Fixed Under Vehicle Surveillance System

ITM-UVSS-F Under Vehicle Inspection System is the fixed solution for the fully automatic identification of threats or modifications to a vehicle's undercarriage.

It can quickly and accurately identify threats, contraband objects and stowaway who are hidden at the Bottom.

ITM-UVSS-F adopts embedded installation way. ITM-UVSS-F Under Vehicle Inspection System is strictly designated on the conception of maintenance free and application in all weather with IP68 Waterproof grade. These make sure the system can work steadily in any climate.

Design Drawing

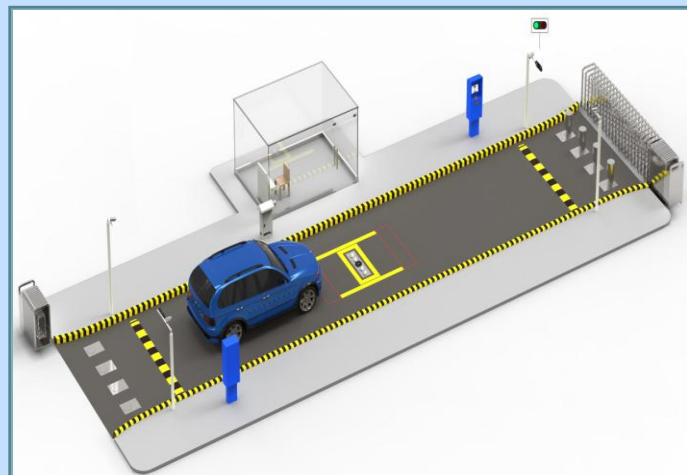
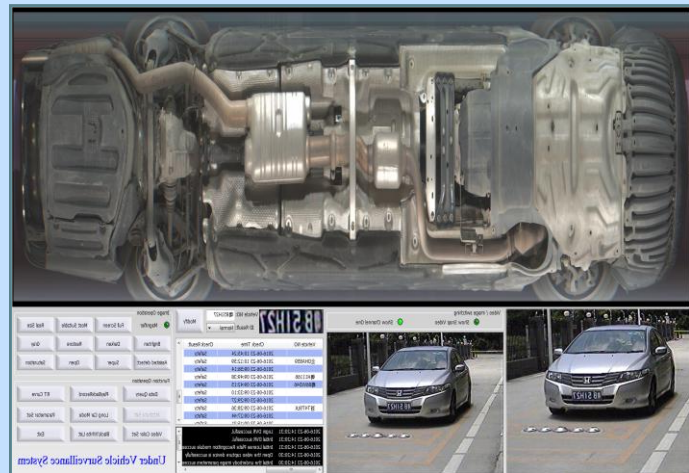


Image Screen & System



Application

Hotel, Jail, Security Station, Customs, Airport, High Speed Railway



Itm Systems

www.itmsystems.com

Technical Specification :

Embedded Frame :

Material	Stainless Steel
Dimension	1200mm x 350mm
Water-proof grade	IP68
Load bearing Weight	50T
Image resolution	12000 *6144

CCD Line Scan Camera :

Type	B/W image
Resolution	5000* 2048 pixels,
Camera view	> 170°
Pixels size	14μm*14μm
Image	Black/white (color optional)
Power Supply	24VDC, 3A
Transfer interface	Gigabit Ethernet/100m
Operating Temperature	-25 °C to +60 °C
Store or load time	<1 second
Vehicle Image scaling	16 times
Vehicle image storage format	BMP or JPEG
Vehicle speed	1-60km/h
Suggest speed	less than 30km/h

LED Illumination:

Power Supply	24VDC, 320W
LED light service life	50,000 hours

Distribution box :

Input	2 channels induction coil
Output	1 Channel switch type 12VDC
Communication port	RS485, 1000M Ethernet (Optional)

Computer :

Brand	Granttech (SYM76941 VGGA)
CPU	Intel (R) Core Processor, 2.6GHz/2.59GHz
Memory	2G (optional 4G)
Graphics	512M
Hard Disk	SATA2 Hard Disk 500G Dual LAN (at least one Intel Gigabit)
USB	2.0 (Up to 2 pieces)
Monitor	22" LCD, resolution up to 1920*1080
Scene Video Record	4 channels, Compression algorithm of scene video: H264 (optional)
Operational system	Windows XP or Windows 7 (32 bit) (optional)